

Indian Institute
of Technology Patna
भारतीय प्रौद्योगिकी संस्थान पटना

PG Certification

LOGISTICS AND SUPPLY CHAIN



Connecting the vast business world

6 Months | Online | Immersive Sessions | Get certified from an IIT

LEARN FROM THE BEST MINDS IN THE COUNTRY - GET THE IIT PATNA ADVANTAGE

Established in 2008, IIT Patna is the newest and fastest-growing premier institution in India.

IIT Patna operates ten departments - Computer Science & Engineering, Electrical Engineering, Mechanical Engineering, Chemical, and Biochemical Engineering, Civil & Environmental Engineering, Materials Science & Engineering, Chemistry, Physics, Mathematics, and Humanities & Social Science departments.

The Institute has developed modern facilities that are fully equipped with state-of-the-art facilities (equipment software and machines) that are routinely used to train and educate students.

The Institution has published in high-quality and peer-reviewed national and international journals.

The faculty members of IIT Patna have a wide range of academic and research experience. They have been trained in the top-ranked Institutes within the country and abroad.



OVERVIEW OF IIT PATNA



Program Overview:

This postgraduate certification program in Logistics and Supply Chain is designed to provide learners with a solid understanding of supply chain management principles and practices. It also imbues the ability to apply this knowledge to drive performance and efficiency in organizations. The program is ideal for executives, managers, and professionals working in logistics, transportation, procurement, supply chain, and related fields. It is also suited for those who are interested in pursuing a career in this growing and dynamic field. Throughout the program, learners will have the opportunity to engage in a variety of learning activities, including virtual lectures, case studies, simulations, group discussions, and assignments.



WHO CAN APPLY? - COURSE ELIGIBILITY

- The program is designed for graduates from a recognized AICTE institute or UGC approved university with minimum 1 year of work experience.
- An aspiring student should have an undergraduate degree in any discipline.

COURSE STRUCTURE

Program Duration - 6 months

Model of delivery - Virtual instructor-led training (VILT)

Components	Learning Effort (Hours)
VILT sessions	36 hours
Student Engagement – Live chat, discussion forum, webinars, expert sessions	4 hours
Session frequency	10 hours
Self-Learning	40 hours
Total	90 hours

Note: The list mentioned above is indicative and is subject to change at the discretion of IIT Patna.



HANDS ON EXPERIENCE



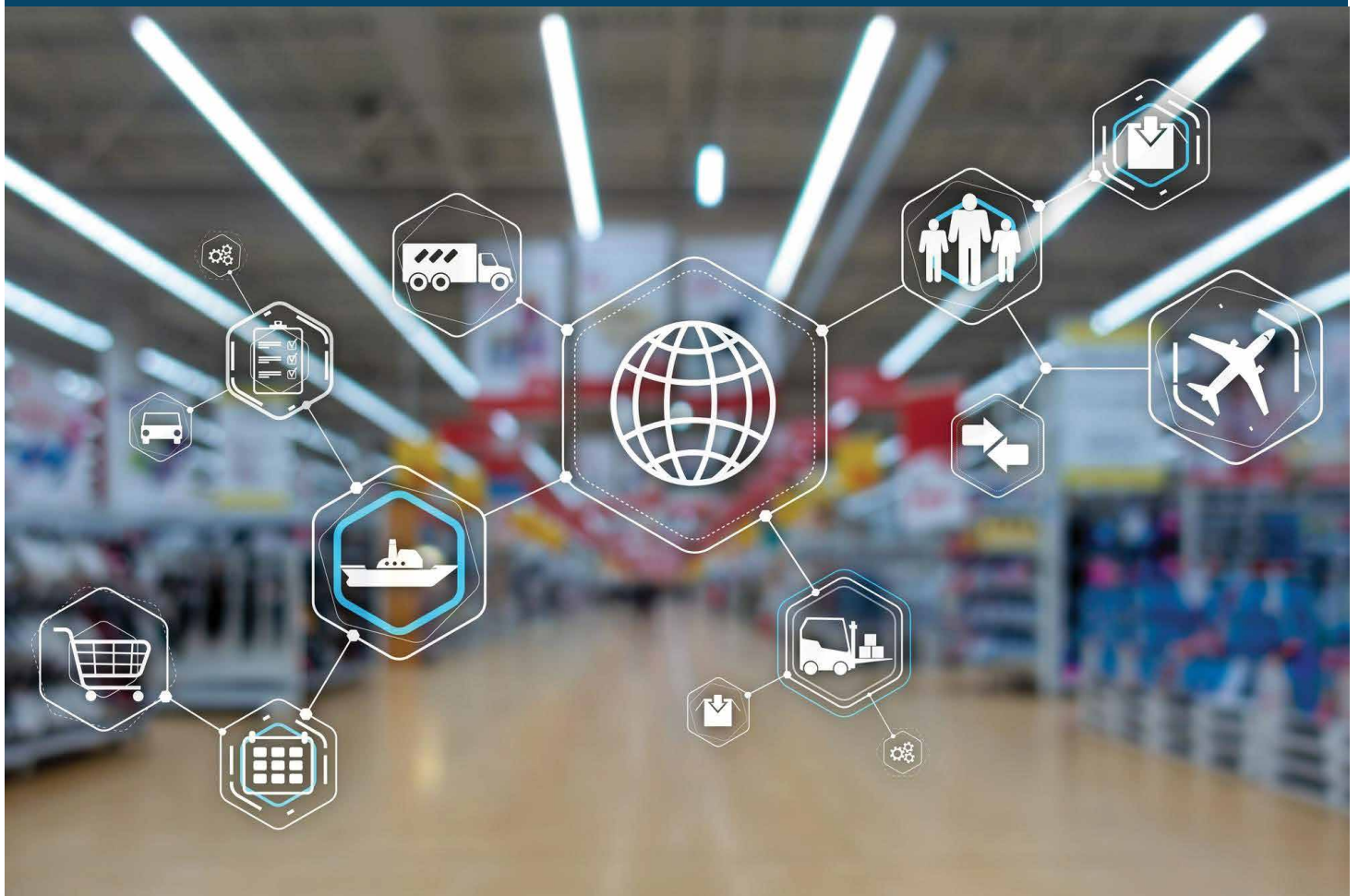
- Hands-on learning with virtual labs
- Faculty led interactive sessions
- Industry based projects
- Case studies and assignments
- Recorded session
- Live chat
- Webinars and expert sessions

The form of delivery will be virtual through self-paced and online learning, with 2 days' workshop at the end of the course for project submission. All other sessions will be through digital platform & delivered LIVE by the eminent faculties associated with the reputed institution. The students will have access to self-learning through different content assets and academic engagement activities.



PROGRAM OBJECTIVES

- **DEVELOP - A deep understanding of the key concepts, principles, and practices** that underpin logistics and supply chain management.
- **LEARN - How to develop and implement supply chain strategies** that align with their organizations' goals and objectives.
- **GAIN - Knowledge and skills in transportation and distribution management**, including inventory management, warehousing, network design, and outsourcing strategies.
- **DEVELOP - A Effective procurement processes and strategies** that enable them to select and manage suppliers, negotiate contracts, and manage supplier performance.
- **UNDERSTAND - Insights into the role of technology and innovation** in logistics and supply chain management, including emerging technologies
- **STUDY - How to leverage technology, improve supply chain visibility, optimize operations**, and create value for customers and stakeholders.



THE LEARNING CURRICULUM

Module	Module Title	Learning Objectives	Topics
1	Introduction to Logistics and Supply Chain Management	<ul style="list-style-type: none"> Understand the role and importance of logistics and supply chain management in organizations. Examine the key components and processes of supply chain management. 	<ul style="list-style-type: none"> Overview of logistics and supply chain management Key components of supply chain management Supply chain processes and challenges Role of logistics and supply chain managers Emerging trends and innovations in logistics and supply chain management
2	Strategic Planning and Operations Management	<ul style="list-style-type: none"> Develop a supply chain strategy that aligns with business goals and objectives Evaluate supply chain performance metrics and key performance indicators (KPIs) 	<ul style="list-style-type: none"> Supply chain strategy and planning Key Performance Indicators (KPIs) and metrics for supply chain performance evaluation Operations management and optimization techniques Supply chain risk management Global supply chain management Managing change in supply chain operations
3	Transportation and Distribution Management	<ul style="list-style-type: none"> Explore transportation modes and their impact on supply chain efficiency and effectiveness Understand the role of inventory management in transportation and distribution operations Analyse the impact of global logistics on supply chain management 	<ul style="list-style-type: none"> Transportation modes and their impact on supply chain management Inventory management and optimization in transportation and distribution Warehousing and distribution network design Logistics outsourcing and partnership Strategies Freight forwarding and customs clearance Global logistics
4	Procurement and Supplier Management	<ul style="list-style-type: none"> Understand the importance of supplier selection and relationship management in supply chain operations Analyse procurement processes and strategies to improve supply chain performance 	<ul style="list-style-type: none"> Procurement processes and strategies for supply chain management Supplier selection and relationship management Supplier performance evaluation and improvement Negotiation skills for supply chain management Legal issues in procurement and supply chain management. Ethical issues in procurement and supply chain management.
5	Technology and Innovation in Supply Chain Management	<ul style="list-style-type: none"> Examine the role of technology in optimizing supply chain operations Analyze emerging trends and innovations in logistics and supply chain management 	<ul style="list-style-type: none"> Role of technology in supply chain management Digital transformation and supply chain visibility Blockchain and other emerging technologies in supply chain management Innovation management and design thinking for supply chain management Simulations on digital technologies and innovation in supply chain management
6	Industry Project	<ul style="list-style-type: none"> Practical Learning 	<ul style="list-style-type: none"> Based on the overall curriculum

ASSESSMENT & ASSIGNMENTS

- Assessment or assignments modules are MCQ-based and problem-based
- Project Viva-Voce will be telephonic and web-based

FINAL EVALUATION

Final Evaluation will comprise of the following components and weights:

- Final Assessment – Multiple Choice Questions (50%)
- Project submission and Viva-Voce (50%)

Upon clearing a minimum of 50% in total, the student will be awarded the certification.

PG CERTIFICATION PROGRAM



AN EYE ON THE FUTURE

The logistics and supply chain management industry in India has been growing rapidly over the past few years, driven by factors such as increasing globalization, rising consumer demand, and the government's focus on infrastructure development. The Indian logistics sector is estimated to be worth USD 215 billion, and is expected to grow at a CAGR of 10.5% over the next five years. According to a report by Deloitte, the industry is expected to generate around 3.5 million jobs by 2023. The industry comprises a range of sub-sectors, including transportation, warehousing, freight forwarding, packaging, and courier services.

POTENTIAL JOB ROLES

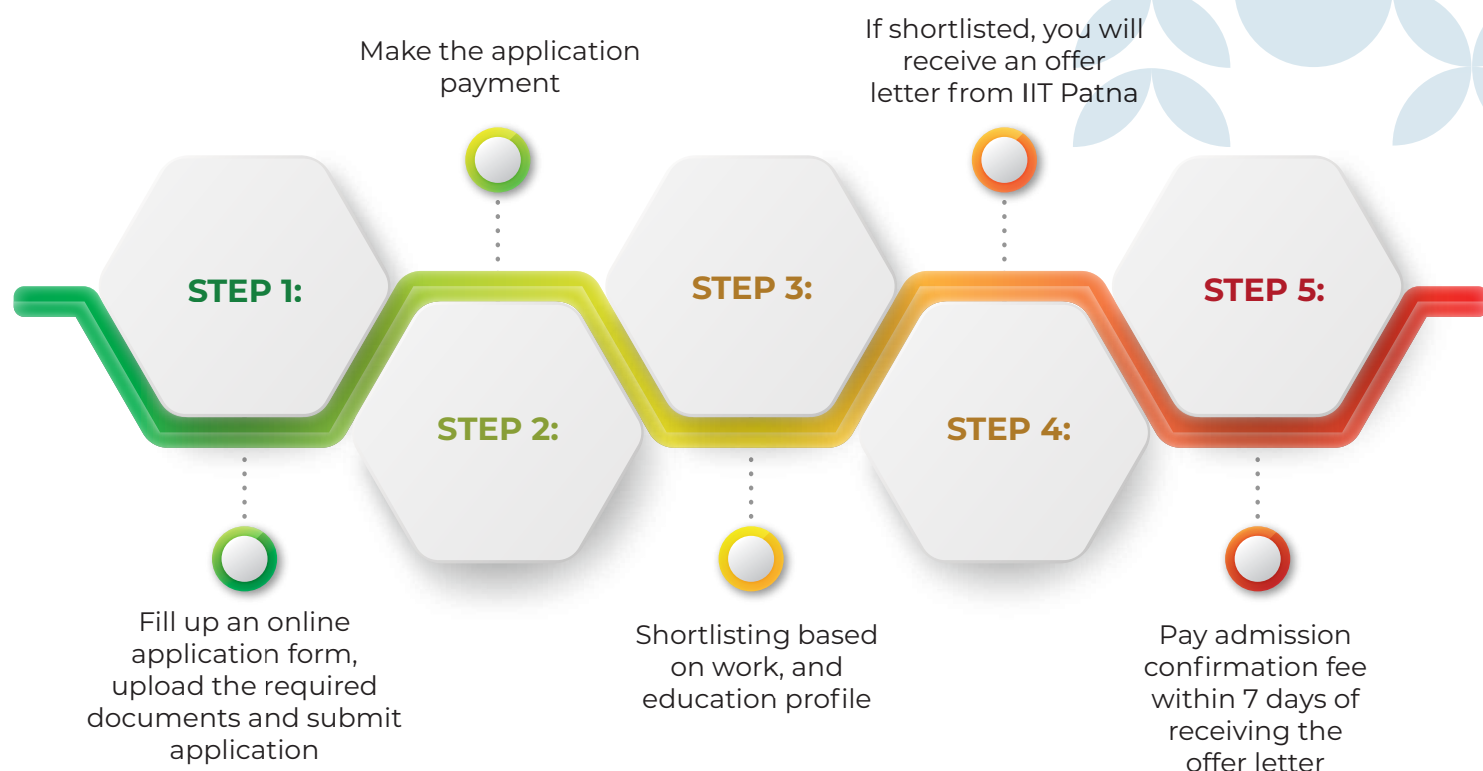
Logistics and supply chain management is a growing and dynamic field, with a wide range of career opportunities available to qualified professionals.

Some of the common job roles in this field include:

- Logistics Coordinator
- Supply Chain Analyst
- Transportation Manager
- Procurement Manager
- Warehouse Manager
- Distribution Manager
- Operations Manager
- Supply Chain Consultant



PROGRAM ADMISSION JOURNEY



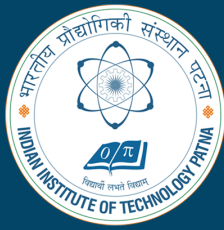
Note: The application fee once paid is not refundable. IIT Patna reserves the right to conduct the admissions process. By submitting the application, the students agree that any decision regarding Admissions from IIT Patna will be final and binding.

FEES SCHEDULE

Fee details	1 st EMI	2 nd EMI
Application Fee (non refundable)	₹ 5,000	-
Fee	₹ 30,000	₹ 30,000
Optional Campus Immersion Fee (5 Days)	₹ 7,000	
Optional Executive Alumni Status Fee	₹ 6,000	
Total Course Fee	₹ 60,000	

Points to note:

- Application fee is non-refundable and exclusive of course fees & optional fees. GST @18% applicable
- All students are requested to strictly adhere to the payment schedule deadlines mentioned in the above table.
- IIT Patna does not charge any processing fee or service charge from the students for online payment. However, online payment gateway charges, over and above course fees need to be borne by the students, as applicable.
- In case of any refund related queries, kindly refer to our refund policies.



Indian Institute of Technology Patna

भारतीय प्रौद्योगिकी संस्थान पटना



Contact us

For application and any other information please
get in touch with us



08047359551



iitpatna.admission@digiversity.com